

First home buyers stop renting!  
**HOME + LAND**

**Domaine**homes

By ClarendonHomes



## Rosewood

1 Lot 57 Philip Street, Rosewood

**\$376,500\***

FIXED PRICE HOME AND LAND

### Malibu 23 | Arden

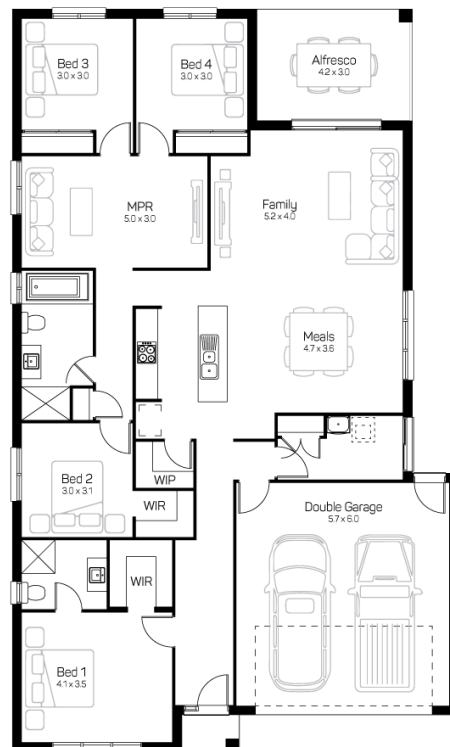
Home Size: 217.60m<sup>2</sup> Land Size 600.00m<sup>2</sup>

 4 |  2 |  2 |  2

### TURN KEY PACKAGE – CLASSIC INCLUSIONS

- Stone benchtops throughout
- 900mm European appliances
- Laminated laundry cabinetry
- Carpet and tiling
- Driveway and letterbox
- Turf to front yard
- Porch and alfresco slab and tiling
- Flyscreens to openable windows and external sliding doors
- Auto garage door
- Lifetime structural guarantee
- Fixed price site works\*

And much, much more...



For more information contact Domenic Pagano 0428049768 | [dpagano@domainehomes.com.au](mailto:dpagano@domainehomes.com.au) | 13 64 69

\*Facade image may depict features not included in the package price shown such as render, tiling, lighting, roof covering, timber decking and landscaping. Plans are subject to approval by the Principal Developer and Local Authorities. Domaine Homes QLD reserves the right to withdraw or alter this package at any time without notice. Fixed Price Site works included on Preferred estates. 10K allowance for site costs on non preferred.