

HOME PACKAGE

Domainehomes

By ClarendonHomes



Rosewood Green

Rosewood

\$340,600*

ON YOUR LAND

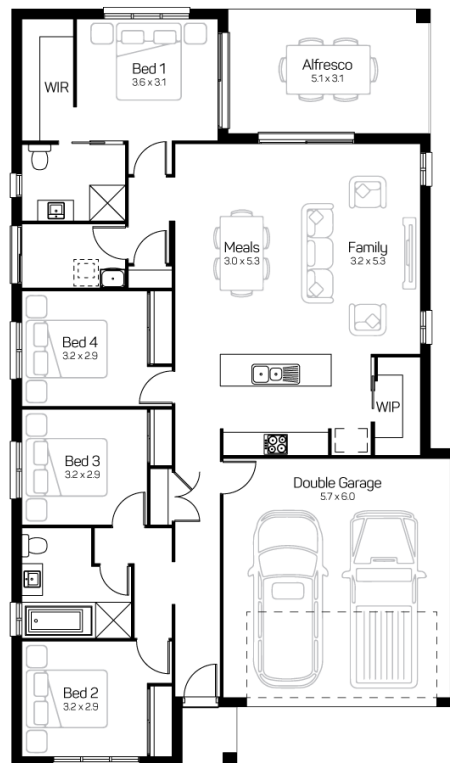
Tahoe 21 | Westhampton
Home Size: 197.10m²

4 | 1 | 2 | 2

HOME ONLY – CLASSIC INCLUSIONS

- Stone benchtops throughout
- 900mm European appliances
- Laminated laundry cabinetry
- Carpet and tiling
- Driveway and letterbox
- Turf to front yard
- Porch and alfresco slab and tiling
- Flyscreens to openable windows and external sliding doors
- Auto garage door
- Lifetime structural guarantee
- Fixed price site works*

And much, much more...



For more information contact Domenic Pagano 0428049768 | dpagano@domainehomes.com.au | 13 64 69

*Price includes \$15,000 QLD First Home Owners Grant for eligible buyers. Facade image may depict features not included in the package price shown such as render, tiling, lighting, roof covering, timber decking and landscaping. Plans are subject to approval by the Principal Developer and Local Authorities. Domaine Homes QLD reserves the right to withdraw or alter this package at any time without notice. *#See a Domaine Homes consultant for full T&C's. QBCC 15150852.